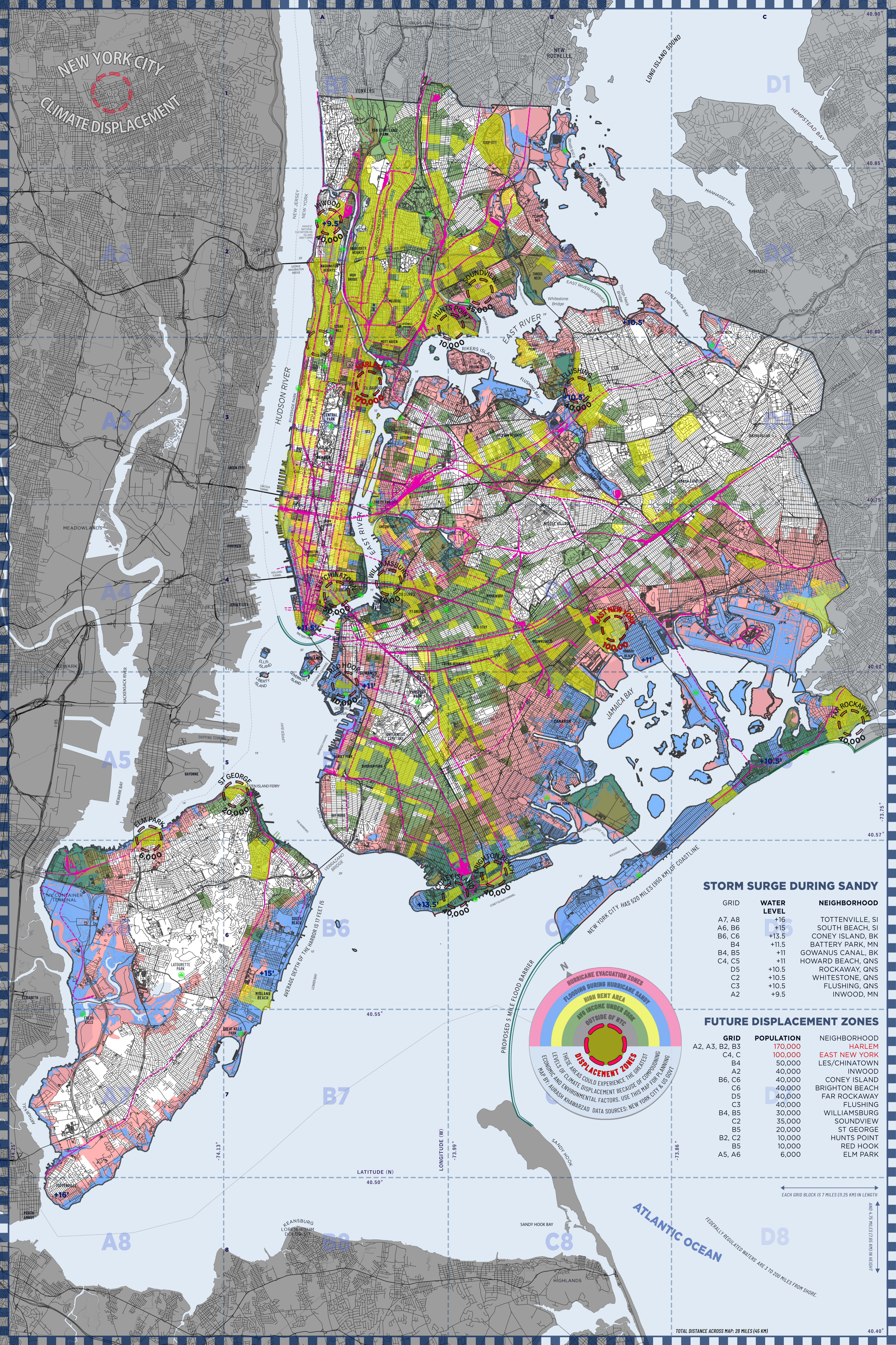


# NEW YORK CITY CLIMATE DISPLACEMENT

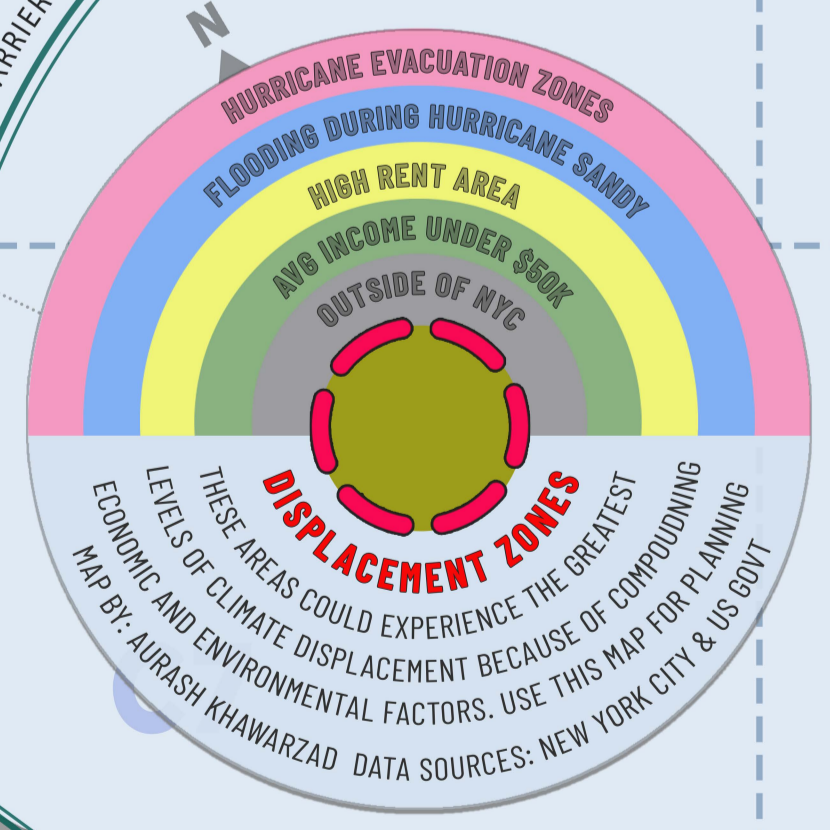


## STORM SURGE DURING SANDY

| GRID   | WATER LEVEL | NEIGHBORHOOD      |
|--------|-------------|-------------------|
| A7, A8 | +16         | TOTTENVILLE, SI   |
| A6, B6 | +15         | SOUTH BEACH, SI   |
| B6, C6 | +13.5       | CONEY ISLAND, BK  |
| B4     | +11.5       | BATTERY PARK, MN  |
| B4, B5 | +11         | GOWANUS CANAL, BK |
| C4, C5 | +11         | HOWARD BEACH, QNS |
| D5     | +10.5       | ROCKAWAY, QNS     |
| C2     | +10.5       | WHITESTONE, QNS   |
| C3     | +10.5       | FLUSHING, QNS     |
| A2     | +9.5        | INWOOD, MN        |

## FUTURE DISPLACEMENT ZONES

| GRID           | POPULATION | NEIGHBORHOOD   |
|----------------|------------|----------------|
| A2, A3, B2, B3 | 170,000    | HARLEM         |
| C4, C          | 100,000    | EAST NEW YORK  |
| B4             | 50,000     | LES/CHINATOWN  |
| A2             | 40,000     | INWOOD         |
| B6, C6         | 40,000     | CONEY ISLAND   |
| C6             | 40,000     | BRIGHTON BEACH |
| D5             | 40,000     | FAR ROCKAWAY   |
| C3             | 40,000     | FLUSHING       |
| B4, B5         | 30,000     | WILLIAMSBURG   |
| C2             | 35,000     | SOUNDVIEW      |
| B5             | 20,000     | ST GEORGE      |
| B2, C2         | 10,000     | HUNTS POINT    |
| B5             | 10,000     | RED HOOK       |
| A5, A6         | 6,000      | ELM PARK       |



← EACH GRID BLOCK IS 7 MILES (11.25 KM) IN LENGTH →

← AND 4.75 MILES (7.65 KM) IN HEIGHT →

TOTAL DISTANCE ACROSS MAP: 28 MILES (45 KM)

NEW YORK CITY HAS 520 MILES (835 KM) OF COASTLINE

PROPOSED 5 MILE FLOOD BARRIER

AVERAGE DEPTH OF THE HARBOR IS 17 FEET (5)

LATITUDE (N)

LONGITUDE (W)

FEDERALLY REGULATED WATERS ARE 3 TO 200 MILES FROM SHORE.